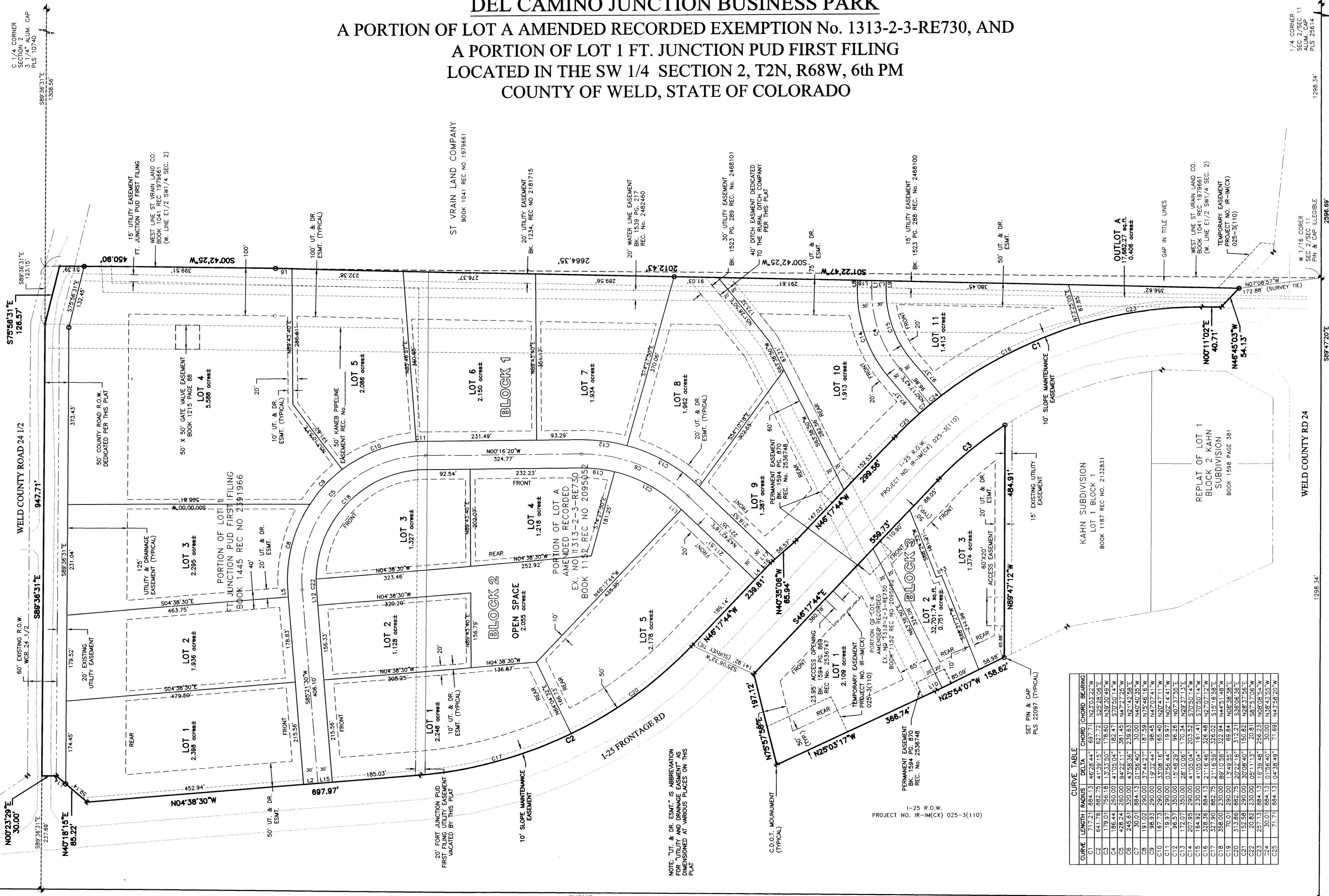


# DEL CAMINO JUNCTION BUSINESS PARK

## A PORTION OF LOT A AMENDED RECORDED EXEMPTION No. 1313-2-3-RE730, AND A PORTION OF LOT 1 FT. JUNCTION PUD FIRST FILING LOCATED IN THE SW 1/4 SECTION 2, T2N, R68W, 6th PM COUNTY OF WELD, STATE OF COLORADO



**AREA TABULATION:**

PORTION	AREA (acres)
BLOCK 1 (12 LOTS)	25.468
BLOCK 2 ( 5 LOTS)	8.099
BLOCK 3 ( 3 LOTS)	4.234
OPEN SPACE	2.055
DEDICATED ROAD 24 1/2 R.O.W.	1.237
DEDICATED "NORTH" ROAD R.O.W.	2.240
DEDICATED "SOUTH" ROAD R.O.W.	0.411
<b>TOTAL AREA</b>	<b>43.744</b>

**NOTE:**  
1. INTERIOR LOT LINES CAN BE VACATED IF TWO OR MORE LOTS ARE OCCUPIED BY A SINGLE USER.



**LINE TABLE**

LINE	BEARING	LENGTH
L1	S88°37'13"E	14.81
L2	N04°38'30"W	30.00
L3	S01°42'47"W	30.00
L4	N46°17'44"W	30.00
L5	S57°42'30"W	34.39
L6	S57°42'30"W	34.39
L7	N43°42'16"E	3.75
L8	N68°37'13"W	14.81
L9	S68°37'13"E	14.81
L10	N25°49'07"W	14.55
L11	S43°22'16"W	9.53
L12	S03°08'42"E	11.43
L13	S03°08'42"E	11.43
L14	S40°18'15"W	26.08
L15	N04°38'30"W	30.00
L16	N46°17'44"W	20.67
L17	N40°35'06"W	9.27
L18	S11°42'47"W	30.00

**CURVE TABLE**

CURVE	LENGTH	RADIUS	CHORD	CHORD BEARING
C1	717.21	884.13	467.84	697.71
C2	641.76	892.75	417.99	627.71
C3	179.01	756.18	133.90	176.60
C4	186.44	260.00	41.05	182.47
C5	228.24	260.00	94.22	181.45
C6	30.01	884.13	17.58	30.00
C7	191.02	290.00	37.44	187.58
C8	98.93	290.00	19.32	96.45
C9	167.73	290.00	33.08	165.40
C10	19.97	290.00	3.96	19.97
C11	19.97	290.00	3.96	19.97
C12	172.07	350.00	35.48	166.54
C13	207.95	350.00	41.05	203.92
C14	164.92	230.00	21.65	161.41
C15	328.38	884.13	176.60	326.48
C16	327.90	884.13	176.60	326.02
C17	356.00	897.00	222.94	354.51
C18	356.00	897.00	222.94	354.51
C19	313.86	882.75	207.95	312.21
C20	152.58	890.00	30.08	150.82
C21	20.82	230.00	0.51	20.81
C22	257.13	884.13	157.99	256.23
C23	30.01	884.13	6.15	30.00
C24	717.21	884.13	467.84	716.91
C25	14.81	884.13	0.43	14.81

**SHEET 2 OF 4**  
10/05/98  
Date of Survey  
520 STACY COURT, SUITE 18  
LAFAYETTE, CO. 80022  
Control # 98002  
Job Number 98002

**GEO SURV**  
LAND SURVEYING AND MAPPING  
520 STACY COURT, SUITE 18  
LAFAYETTE, CO. 80022  
Ph. 303.666.0379 Fax 303.665.6320